

# CR Phantom

## CR Phantom Type I + II

according to ISO 16371-1, ASTM E2445



CR Phantom for Qualification of CR Systems  
Process Control and Long-Term-Stability

# Test Phantom for Qualification of Image Plate Scanner Systems (CR)

CR Phantom enables to test all relevant parameters of CR Scanner systems and Imaging Plates (IP) like Basic Spatial Resolution, MTF, Contrast Sensitivity, Blooming, Laser Jitter, Scanner Slippage, Shading, Erasure and more. These tests required and described in detail in standards ASTM E2445 and ISO 16371-1 have to be performed periodically for checking process control and long-term-stability.

The KOWOTEST CR Phantom type I exceed these standards by including two Duplex Wire Type IQIs and measuring points for Shading in both axes - portrait and landscape. All required information is mapped on the Imaging Plate with a single X-ray exposure. Phantom must not be rotated to generate information of second axis. This results in higher accuracy and significant time savings.

## Specification CR Phantom Type I

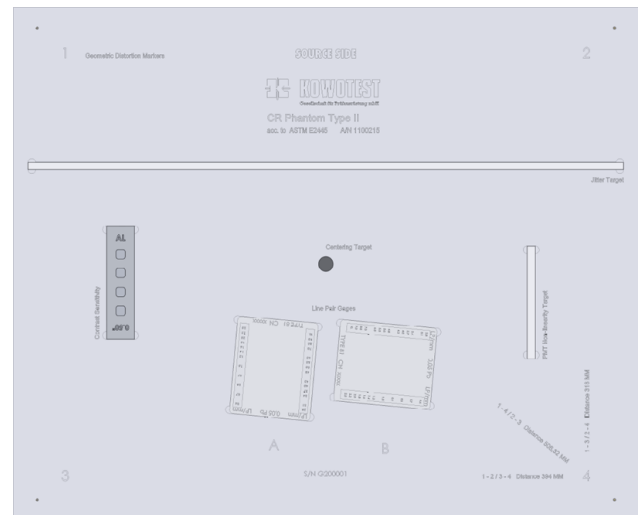
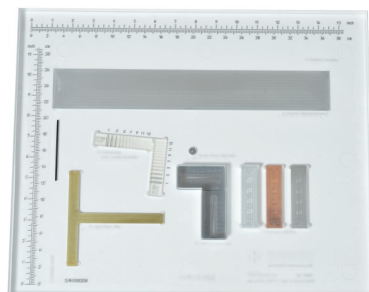
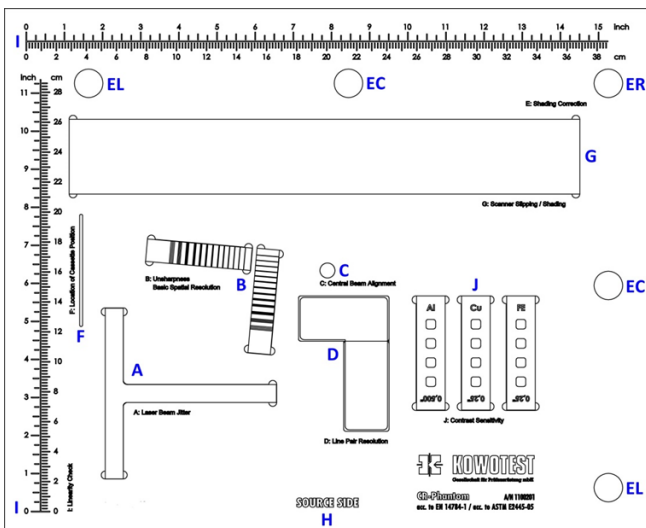
according to ASTM E2445 and ISO 16371-1 :

IQI, Gauge	Test, Check
<b>A</b> T-Target	Laser Jitter, MTF, PMT Non-Linearity
<b>B</b> Duplex Wire Type IQIs	Basic Spatial Resolution, Unsharpness
<b>C</b> BAM Snail	Central Beam Alignment
<b>D</b> Line Pair Gauges	Resolution
<b>E</b> Shading Tests	Shading
<b>F</b> Cassette Position Locator	Position of IP
<b>G</b> Homogeneous Strip Target	Scanner Slippage
<b>H</b> Lucite Plate	Carrier Plate
<b>I</b> Linearity IQI - cm-/ inch Rulers	Spatial Linearity, Distortion
<b>J</b> Contrast Sensitivity Gauges	Contrast Sensitivity
Dimensions:	430 x 350 x 19 mm

## Specification CR Phantom Type II (USAF)

according to ASTM E2445 :

IQI, Gauge	Test, Check
Jitter Target - brass	Laser Jitter, MTF, Blooming (Flare)
PMT Non-Linearity Target	PMT Linearity
BAM Snail	Central Beam Alignment
Line Pair Gauge	Line Pair Resolution
Lucite Plate	Carrier Plate
Geometric Distortion Markers	Linearity Check
Contrast Sensitivity Gauge AL	Contrast Sensitivity
Dimensions:	17 x 14 x .67 inch



## Scope of Supply:

- CR Phantom - Type I - 2x Duplex IQIs D13, in wooden case
- CR Phantom - Type I HiRes - 2x Duplex IQIs D15, in in wooden case
- CR Phantom - Type I UHiRes - 2x Duplex IQIs D17 HR4, in in wooden case
- CR Phantom - Type II in wooden case

- Article No.: 11 00201
- Article No.: 11 00211
- Article No.: 11 00217
- Article No.: 11 00215



Test certificates acc. to ASTM E2445, ISO 16371-1 and Declaration of Conformity acc. to EN ISO/ IEC 17050-1/ -2